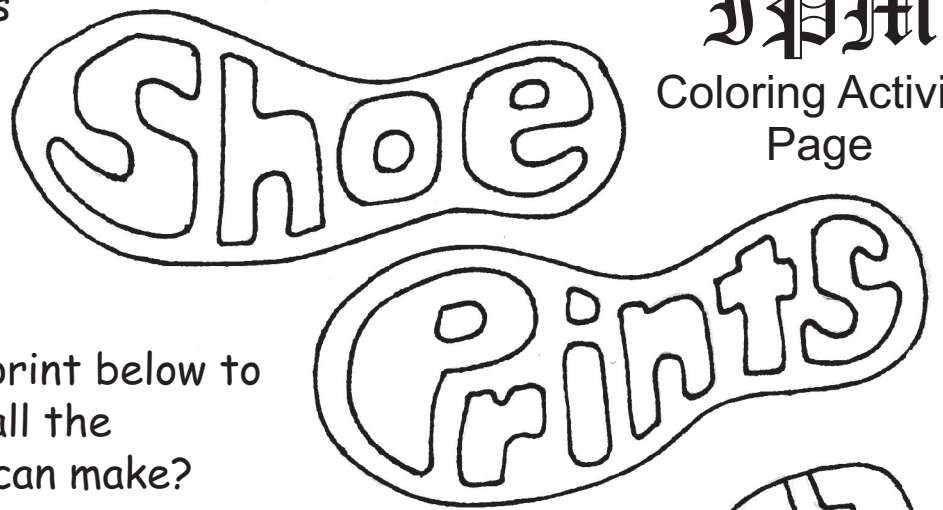


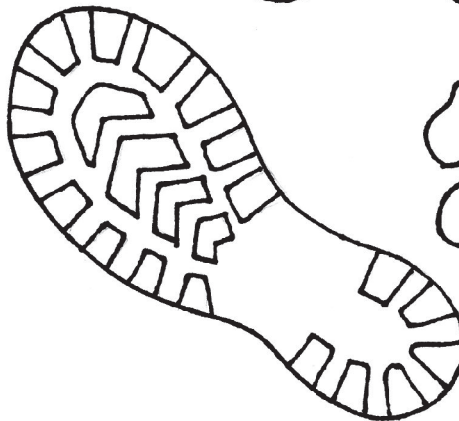
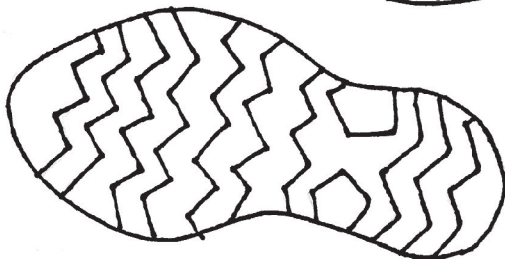
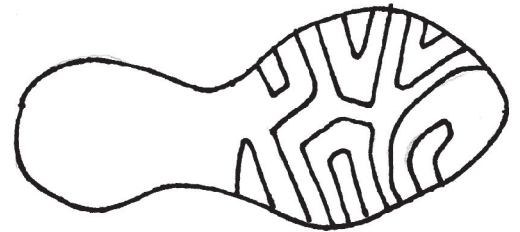
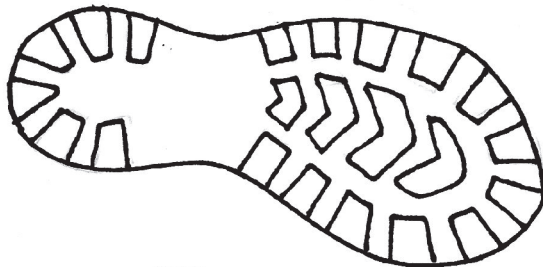
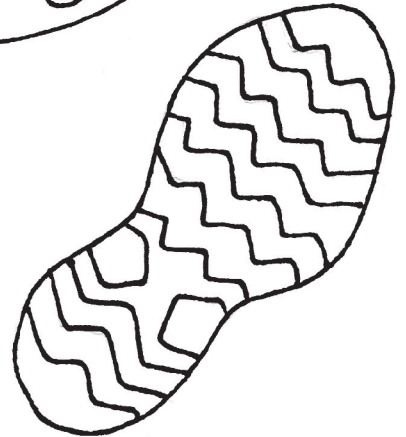
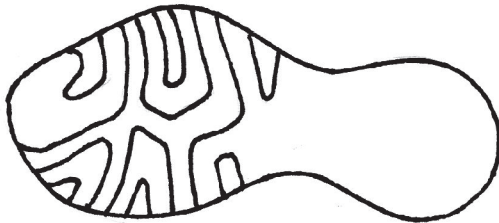
Police can use shoe prints to solve crimes. Shoes have many different patterns that leave prints that the police can check to see if the suspect's shoes match.

Draw a line from a shoe print below to the matching print. See all the different designs shoes can make?

One set of prints do not belong with the others, can you tell which prints are different and guess who made them?



**IPM**  
Coloring Activity  
Page



Police sometimes look for other prints to solve crimes. Look at the print below; can you tell what might have made that

